



# Making R Accessible to More Users with Spotfire

July 2010

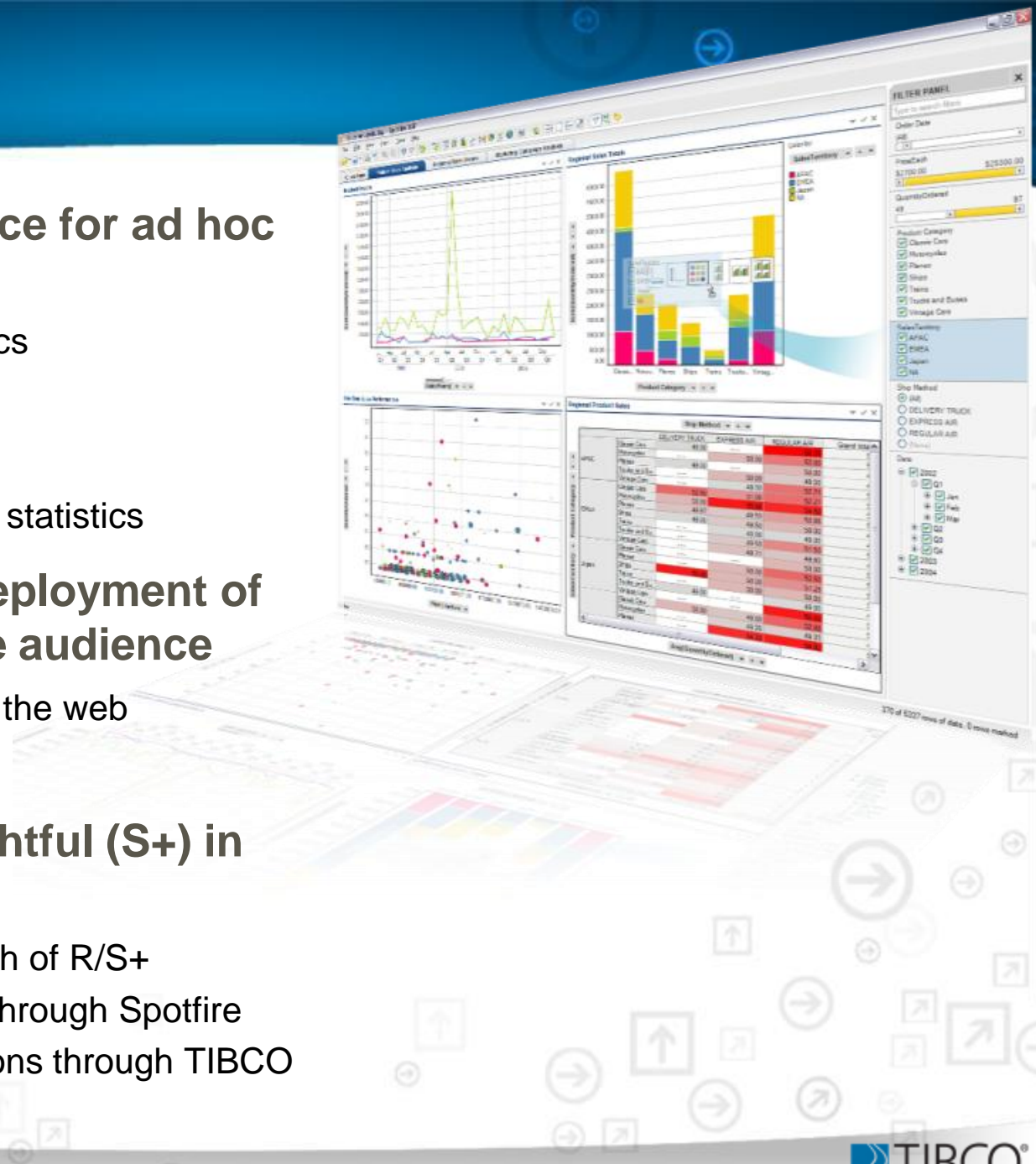
Lou Bajuk-Yorgan, Sr. Dir., Product Management

Stephen Kaluzny, Principal Architect



# Spotfire

- **Unique user experience for ad hoc data analysis**
  - Highly interactive graphics
  - Rapidly filter data
  - Easily get data details
  - Integration with R/S+ for statistics
- **Rapid creation and deployment of applications to a wide audience**
  - One click deployment to the web
- **TIBCO acquired Insightful (S+) in 2008**
  - Mission: extend the reach of R/S+
    - Business analysts through Spotfire
    - Real-time applications through TIBCO



## ***Statistician's View:***

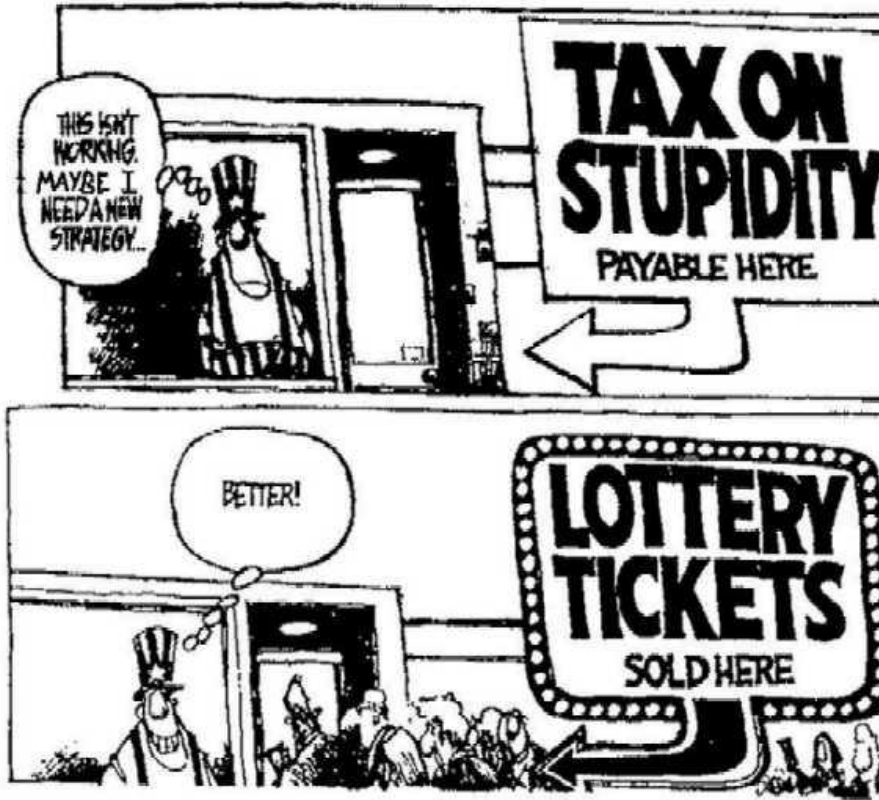
- It is the mark of a truly intelligent person to be moved by statistics.

*George Bernard Shaw*

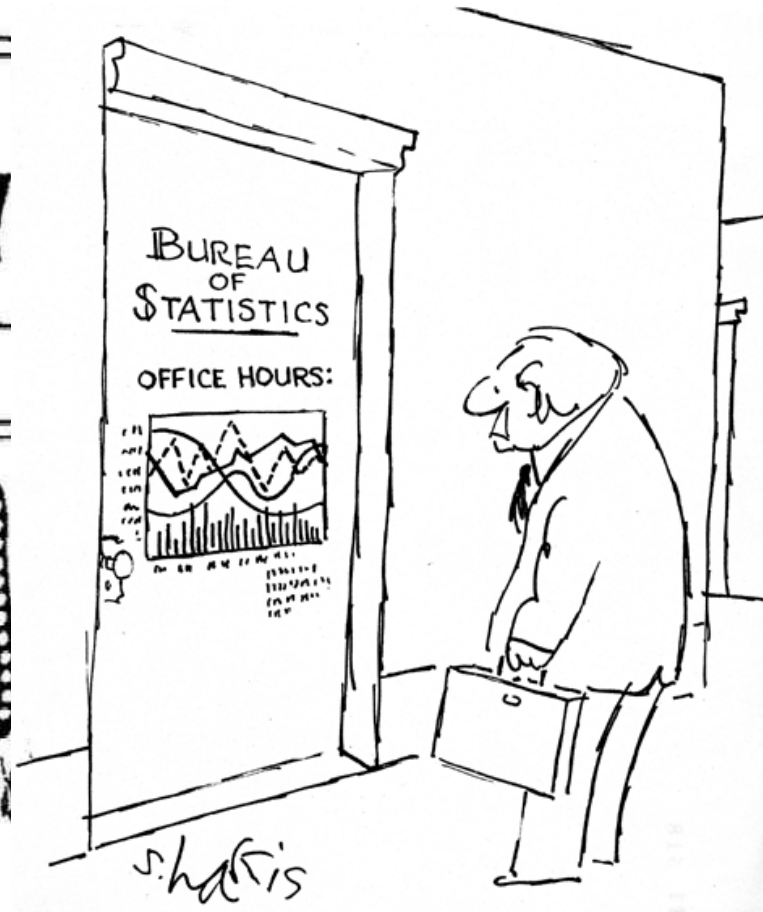
## ***Everybody else:***

- "96.37% of the people who use statistics in arguments make them up."
- "Statistics means never having to say you're certain."

## Statistician's View:



## Everybody else:



# Benefits

Managers, Consumers,  
Executives



## ■ Consumers

- Relevant, useful, accessible applications
- Greater confidence and insight, better decisions
- No need to learn statistics

Analysts,  
Application Authors



## ■ Application Authors

- Leverage advanced analytics developed by statisticians
- Create sophisticated, interactive applications without coding
- Easy one-click web deployment

Statisticians



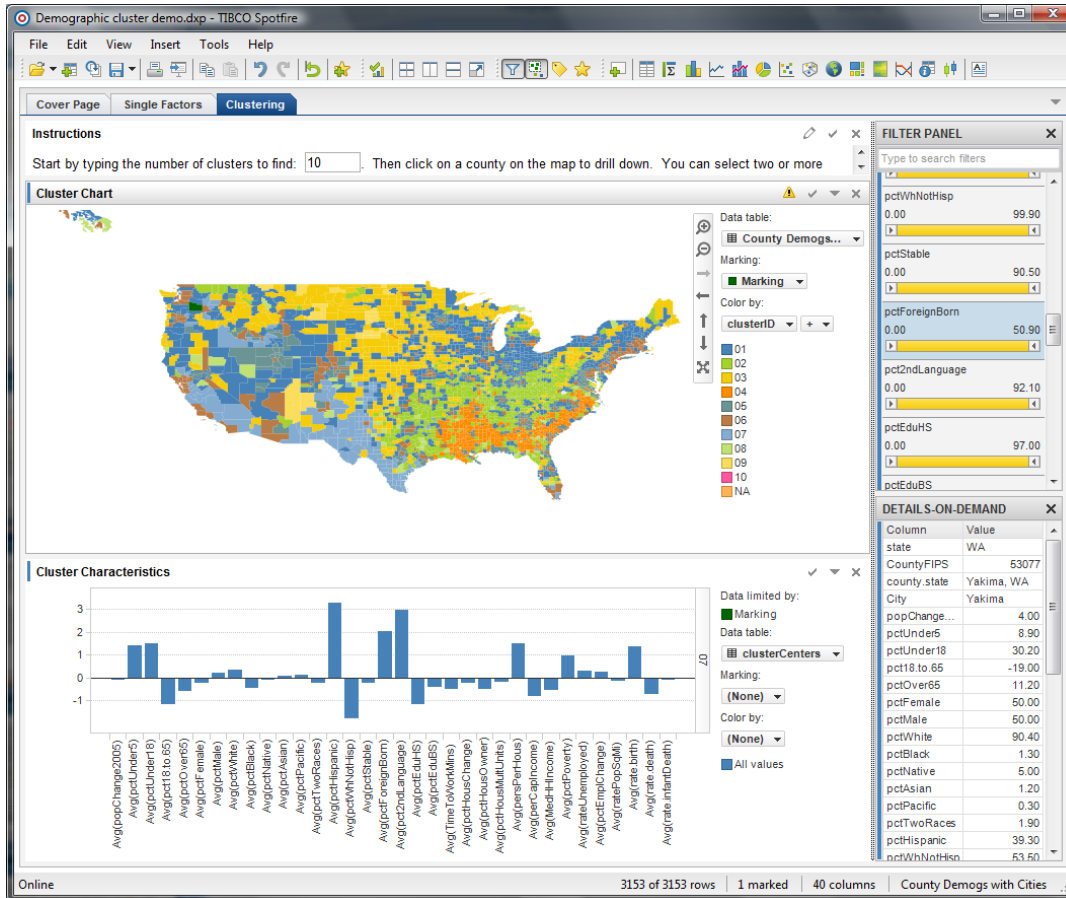
## ■ Statisticians

- Easily share valuable packages for making better decisions
- Free up time from re-running repetitive analysis
- Confidence that the statistics are used properly

# Integration with R

- **Spotfire Statistics Services (formerly S+ Server)**
  - Manage clusters of R/S+ jobs
  - Centralized repository of R/S+ functions and libraries
  - Integrate via web services through standard Java and .NET APIs
  - Integration with Spotfire platform
  
- **Spotfire**
  - Access to R/S+ functions and libraries
  - Integrate R/S+ analyses into Spotfire applications
  - Share Spotfire applications to other Spotfire users and web users
    - R/S+ not required locally

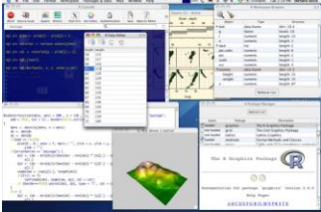
# Statistically-powered applications in Spotfire



- Focused application
- Interactive graphics on millions of rows
- Filter data
- Details on Demand
- Leverage R analytics transparently
  - No command line

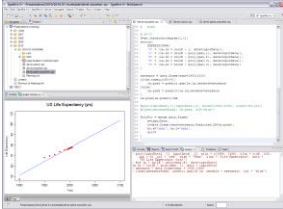
# Integrating Statistics into Spotfire

Statisticians



R

Develops analytic



S+

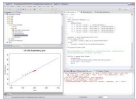


# Integrating Statistics into Spotfire

## Statisticians



Develops analytic



## Spotfire Statistics Services

Deploys and registers analytic



Makes analytic available to application authors

# Integrating Statistics into Spotfire

Statisticians

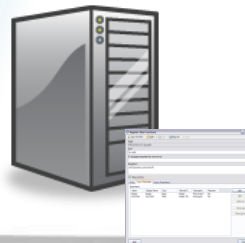


Develops analytic



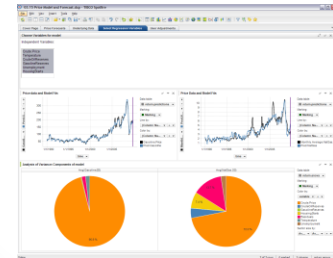
Deploys and registers analytic

Spotfire Statistics Services



Configure Application to use analytic

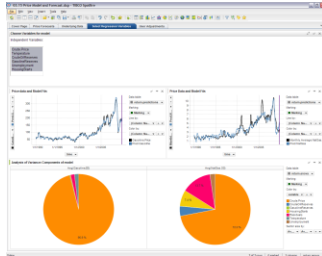
Analysts,  
Application Authors



**No coding required**

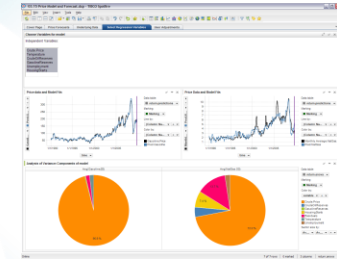
# Integrating Statistics into Spotfire

Managers, Consumers, Executives



One-click deployment of web applications

Centrally-managed application based on best practices



Statisticians



Develops analytic



Spotfire Statistics Services

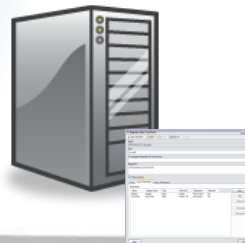
Configure Application to use Data Functions

Analysts, Application Authors



Deploys analytic

Registers Data Function



# Demo & More Information

- **TIBCO Booth**
- **Web resources at <http://spotfire.tibco.com/>**
  - Product info, community site, technical resources
- **Contact us**
  - [lbajuk@tibco.com](mailto:lbajuk@tibco.com)
  - [skaluzny@tibco.com](mailto:skaluzny@tibco.com)